

playground

30' easement

55' creek buffer

75' scenic corridor

Image: DFP conceptual site plan; [page 127](#) In the Adopted Housing Element

3350 Alpine Road: pluses and minuses as compared with Dorothy Ford Park

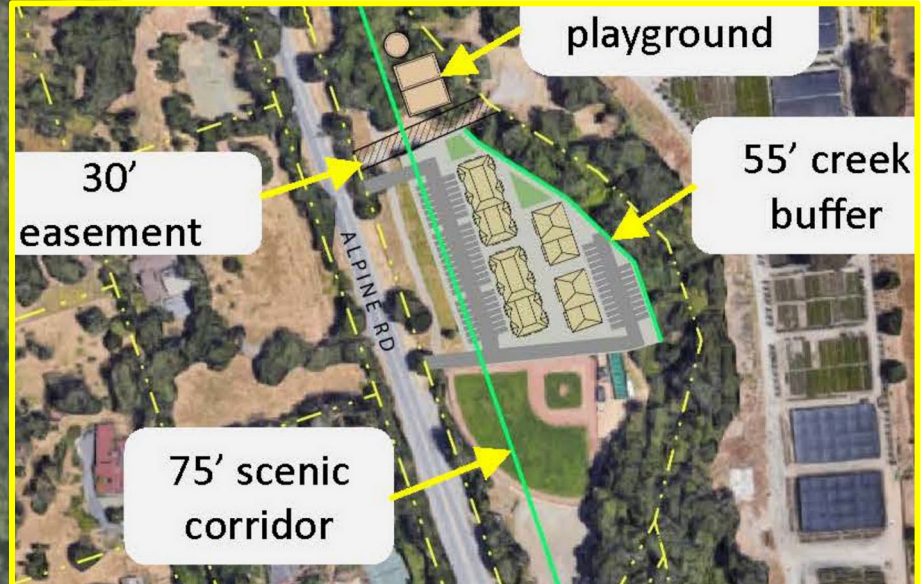


- + 2.9 acres; larger than DFP proposed development
- Same scenic corridor setback, 75'
- + Privately owned
- Has a residence, owner occupied
- + Sewer connection

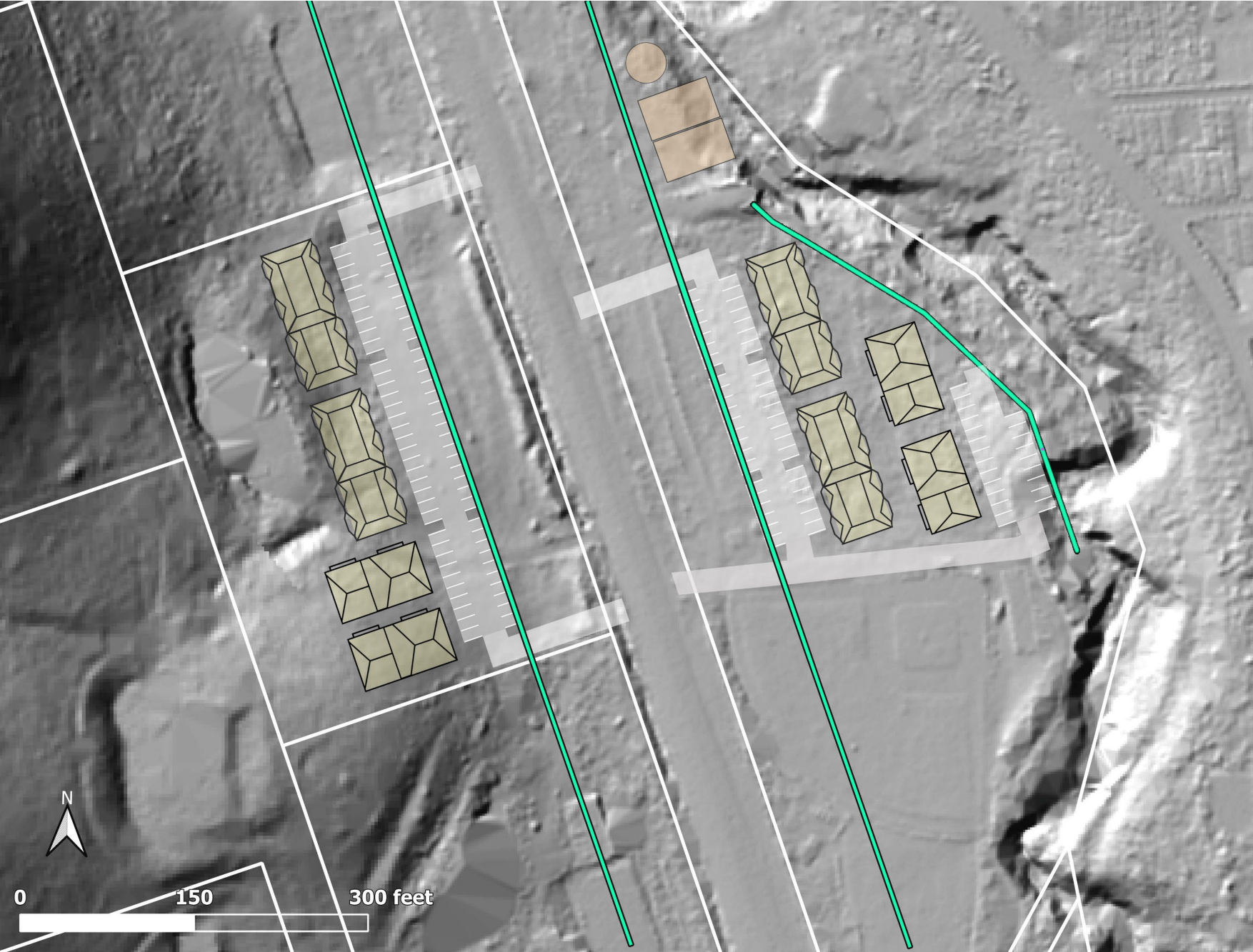
3350 Alpine Road: pluses and minuses as compared with Dorothy Ford Park



- + 2.9 acres; larger than DFP proposed development
- Same scenic corridor setback, 75'
- + Privately owned
- Has a residence, owner occupied
- + Sewer connection
- + Longer frontage: simplifies access & parking

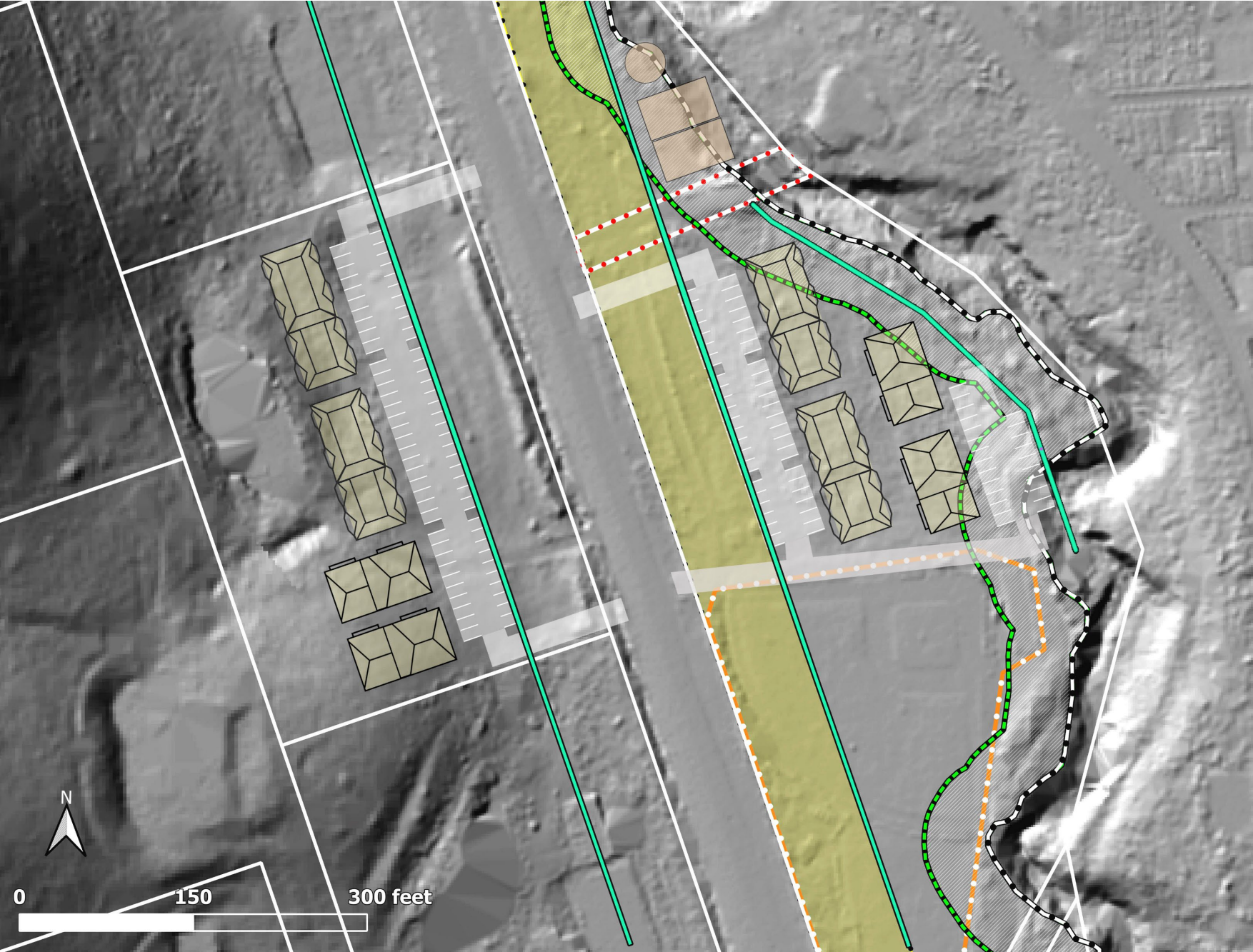


3350 Alpine Road: pluses and minuses as compared with Dorothy Ford Park



- + 2.9 acres; larger than DFP proposed development
- Same scenic corridor setback, 75'
- + Privately owned
- Has a residence, owner occupied
- + Sewer connection
- + Longer frontage: simplifies access & parking
- +/- Possible neighbor opposition, but uphill neighbors see DFP more
- + Not subject to 55' creek setback
- + Not vulnerable to bank erosion or shifts in Los Trancos Creek

3350 Alpine Road: pluses and minuses as compared with Dorothy Ford Park



- + 2.9 acres; larger than DFP proposed development
- Same scenic corridor setback, 75'
- + Privately owned
- Has a residence, owner occupied
- + Sewer connection
- + Longer frontage: simplifies access & parking
- +/- Possible neighbor opposition, but uphill neighbors see DFP more
- + Not subject to 55' creek setback
- + Not vulnerable to bank erosion, shifts in Los Trancos Creek