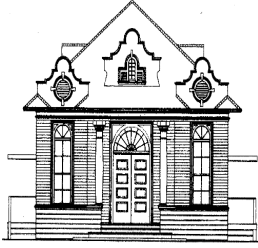


**10/10/25 - Canceled due to lack of quorum**



## TOWN OF PORTOLA VALLEY

**Wildfire Preparedness  
Committee Meeting  
Wednesday October 15, 2025  
4 p.m.-6 p.m.**

MJ Lee, Chair  
Wanda Ginner, Member  
Jennifer Hammer, Member  
Kimberley Cashin, Member  
Marianne Plunder, Conservation  
Committee Liaison and member

### **HISTORIC SCHOOLHOUSE- 775 PORTOLA RD. - PORTOLA VALLEY, CA**

**REMOTE MEETING ADVISORY:** On March 1, 2023, all committees in Portola Valley will return to conducting in-person meetings. A Zoom link will be provided for members of the public to participate remotely; however, the Town cannot guarantee there will be no technical issues with the software during the meeting. For best public participation results, attending the meeting in-person is advised.

### **ASSISTANCE FOR PEOPLE WITH DISABILITIES**

In compliance with the Americans with Disabilities Act, if you need special assistance to participate in this meeting, please contact the Town Clerk at (650) 851-1700 or by email at [towncenter@portolavalley.net](mailto:towncenter@portolavalley.net). Notification 48 hours prior to the meeting will enable the Town to make reasonable arrangements to ensure accessibility to this meeting.

### **VIRTUAL PARTICIPATION VIA ZOOM**

#### **To access the meeting by computer:**

<https://us06web.zoom.us/j/89667802085?pwd=Tg8BeWijV4TIQg6G8bR2cLnxbxPO.1>

**Webinar ID:** 896 6780 2085

**Passcode:** 976428

#### **To access the meeting by phone:**

1-669-900-6833 or 1-888-788-0099 (toll-free)

*Mute/Unmute – Press \*6 / Raise Hand – Press \*9*

- 1. CALL TO ORDER & ROLL CALL**
- 2. ORAL COMMUNICATIONS FOR ITEMS NOT ON THE AGENDA**  
*Speakers' time is limited to three minutes*
- 3. APPROVAL OF MINUTES:**
  - a. September 17, 2025
- 4. NEW BUSINESS:**
  - a. Discuss new meeting day and time for 2026 – 1<sup>st</sup> or 4<sup>th</sup> Monday @ 9:00 AM
  - b. Discuss goals for 2025 and 2026
- 5. SUBCOMMITTEE AND COMMITTEE LIAISON UPDATES:**
  - a. Mitigation Subcommittee update
  - b. EPC Committee Update
  - c. Finance and Insurance Subcommittee update
  - d. Conservation Committee update
- 6. OTHER BUSINESS/STANDING ITEMS**
  - a. Agenda for next meeting
  - b. Quorum Check for meeting
- 7. ADJOURNMENT**

The next regularly scheduled meeting date is Wed Nov-19-2025



**TOWN OF PORTOLA VALLEY**  
**Wildfire Preparedness Committee**  
**Wednesday September 17, 2025 – 4:00 PM**  
**Hybrid on Zoom**  
**765 Portola Road, Portola Valley, CA 94028**

---

**ACTION MINUTES**

A recording of the meeting is [here](#)  
The meeting Agenda Packet is [here](#)

Call to Order at 4:00 PM: Chair Jennifer Hammer

1. Roll Call

Present: Wanda Ginner, Jennifer Hammer, MJ Lee, Kimberley Cashin, Council  
Liaison Craig Taylor (on zoom)

Absent: Marianne Plunder

Guests: Betsy Burton Firebaugh

2. Oral Communications for items not on the agenda

There were no oral communications.

There was no public comment.

3. Approve Minutes of previous meeting

The minutes of Jul-16-2025 were approved unanimously M/S Hammer / Ginner

**NEW BUSINESS**

4. Vote for Officers

Jennifer Hammer is stepping down as Chair and nominated MJ Lee for Chair

Approved unanimously M/S Ginner / Cashin

Chair Lee thanked Jennifer Hammer for her inspirational leadership of the WPC; she held steadfast through some tough times, kept the committee going, and delivered 2 wildfire preparedness fairs amongst other accomplishments.

There was no public comment

5. Fire Marshal Update – Fire Marshal Kim Giuliacci

No update because FM Giuliacci was absent

6. Betsy Burton Firebaugh's personal story on recovering from the 2020 CZU Fire

Betsy Burton Firebaugh and her husband survived the 2020 CZU Fire. They lost their home in Bonny Doon but finished rebuilding it this past January. Betsy's presentation starts [here](#). Over 45 mins of presentation and Q&A, she shared many lessons learned, just a few of which were:

- Power went out, they had no cell signal and didn't receive any notification until 24 hours later. They evacuated when they saw flames.
- A friend cleaned her house and changed bed sheets, expecting to return to a fresh house. Instead, plan ahead on what to pack and when to evacuate.
- Her house had a metal roof, but she thinks the fire started from embers on the wood deck after they evacuated
- In recovery, people want to help, so tell them what you need.
- There are not enough mental health services in recovery. The divorce rate was 50% after the fire.
- Betsy showed the very resilient house they have now built, which earned the Wildfire Prepared Home – Plus certificate.

The following member of the public spoke regarding the item: Cyrena Simons

7. Discussion of safety initiatives

At the Aug-27-2025 Town Council meeting, the TC Safety and Resilience Planning Subcommittee (Rebecca Flynn and Craig Taylor) submitted its recommendation on proposed safety initiatives. Craig called out initiatives the WPC can consider in forming their goals for 2025-2026; generally: home vegetation management, home hardening, firewise, and more specifically, a vendor list and family preparedness.

8. Discuss goals for 2025 and 2026

MJ presented a list of potential goals to be discussed at the October meeting.

## **SUBCOMMITTEE AND STAFF/LIAISON UPDATES**

9. Finance and Insurance Subcommittee Update – Jennifer Hammer

The upcoming report in November will emphasize Housing Element question.

10. Conservation Committee Update – Marianne Plunder

No report as Marianne Plunder was absent

11. Mitigation Subcommittee Update – MJ Lee

Jennifer Hammer reported that ASCC Chair Carter Warr and Mayor Judith Hasko are in alignment with the WPC's decking ordinance recommendation. Craig Taylor will work with the revamping planning dept to get this on the TC agenda.

12. Meeting adjourned at 5:30 PM. Next meeting Wed Oct-15-2025 at 4:00 PM.

/s/ MJ Lee

# Potential WPC goals for 2025-2026

-mj lee  
Oct-15-2025  
rev1

## IMMEDIATE TERM (now thru 2026) – page 1 of 2

Reference = TC Safety and Resilience Initiatives

- Family evacuation plan →→ EPC ??
  - PV Wildfire Evac plan is posted on [EPC's webpage](#)
  - Include instructions for citizens in the plan appendix ??
- Best practices
  - Engage with WPV-Ready
  - Engage with Conservation Committee
  - Distribute thru town channels
    - WPC must be able to update its webpage !!
- Home vegetation management
  - Support WFPD 24-01 fuel mitigation ordinance rollout
    - Promote scheduling by Firewise blocks
    - “Every household inspected – makes PV safer”
    - Publish video of a WFPD inspection ??
  - Create a [vendor list](#) for fuel reduction (and HH)
- Home Hardening
  - List of easy to achieve home hardening practices
- Endorsed & championed by the TC or Mayor ??

# Potential WPC goals for 2025-2026

-mj lee

Oct-15-2025

rev1

## IMMEDIATE TERM (now thru 2026) – page 2 of 2

Reference = TC Safety and Resilience Initiatives

- Reduce PV wildfire risk thru NFPA Firewise and IBHS WPH programs
  - recruit Firewise leaders for new PV neighborhoods
    - 1:30 ratio = 30 new block leaders for 900 homes
  - Support Firewise leaders with content, events, templates ??
  - Zone Zero / WPH home tour (jointly with Fire Safe SMC ??)
  - Encourage people to get their homes WPH certified
- Ordinances
  - get TC to accept Feb-2024 WPC memo on decking ordinance
  - new - Bring wood shake roof up to current code on change of ownership

### MUST DO

- Issue final Insurance Tracking Report in Dec-2025
- *Recruit new member(s)*

# Potential WPC goals for 2025-2026

-mj lee  
Oct-15-2025  
rev1

## MEDIUM TERM (2026)

- Signage (work with Public Works ??)
  - Road signage on Red flag warning days
  - No smoking signs on trails where there is a lot of flashy fuels
- Establish monthly, bimonthly or quarterly Public Communications
  - Annual seminar/talk

# Potential WPC goals for 2025-2026

-mj lee  
Oct-15-2025  
rev1

## LONGER TERM (not scheduled)

- Engage with Conservation committee
  - Use of goats ??
  - Increase the Flammable Five list
    - →→ own by Conservation ??
  - Engage with MROSD on fuel breaks next to PV ??
    - See LT safety & resilience Initiative for WRRBA Wildfire Risk Reduction Buffer area plan
- Grants - for home hardening and DSpace ??



# TOWN OF PORTOLA VALLEY

## Subcommittee Report

---

**TO:** Mayor and Members of the Town Council

**FROM:** Councilmembers Flynn and Taylor

**DATE:** August 27, 2025

**RE:** Safety and Resilience Planning Subcommittee Update

### **RECOMMENDATION**

The Safety and Resilience Planning Subcommittee recommends that the Town Council comment on the proposed safety initiatives and provide direction to the Subcommittee on future work with the Town safety committees: Bicycle, Pedestrian and Traffic (BPTS); Emergency Preparedness (EPC); Geologic Safety; Wildfire Preparedness (WPC), and other committees as relevant.

### **BACKGROUND**

Given the severity of the risks in Portola Valley around wildfire, earthquake, landslide, and flooding risks, it's important that the Town and the Town Council prioritize getting programs and funding in place to implement safeguards for the community. The Safety Framework is an important part of this process and combined with the Safety Element can provide the Town an important roadmap for mitigating risks in the Town.

To that end, the Council approved the formation of a Resilience Planning Subcommittee to create a comprehensive list of potential safety initiatives. The Subcommittee proposed two immediate goals: 1) a draft list of safety initiatives roughly divided into high, medium and low priorities; 2) a recommendation on whether a multi-disciplinary Safety Task Force is warranted and how best to engage existing safety committees and the community.

This report provides, as a first draft, a list of safety initiatives. If the Council agrees that this list is heading in the right direction the Subcommittee will work with the relevant safety committees to work on the details and discuss the pros and cons of a Safety Task Force.

## **DISCUSSION**

Discussion points for the Council:

- What are we missing?
- Is the list of initiatives a reasonable starting point? The intent was to keep it fairly high level and coordinate the safety committees to work out the program details.
- How do we, the Council, support and encourage the safety committees in carrying out the programs? Ideally each group will publish a set of goals for this year and next.
- At what level does the Council want to be involved? The list will evolve, does the Council want to do quarterly or annual reviews? In the past, Councils have designated the fifth Wednesday as a safety meeting (2025 had 3 fifth Wednesdays).

## **FISCAL IMPACT**

No staff time would be involved at this point.

Following is a newer draft of the initiatives, dated Oct-8-2025

# SAFETY AND RESILIENCE INITIATIVES

## PRELIMINARY DRAFT

### for Review by Committees and TC Subcommittee on Safety and Resilience Initiatives.

Oct 8, 2025

Note: Instructions for Committees: All initiatives listed under Immediate or Medium term must be achievable goals with approved (or expected) budgets for the immediate and medium terms (by Dec 2026) that individuals, subcommittees, committees or other organizations are willing to commit to for the next 16 months. All other initiatives that do not fit in 2025 and 2026 goals or do not have current or expected funding will be placed in the Longer Term Section for future resource and budget considerations.

## Immediate Term (This calendar year and continue in FY26)

1. Evacuation and Readiness - Be ready for wildfires, earthquakes, and other disasters as well as cascading hazards with community alerts, evacuation routes, shelter-in-place procedures, and family plans.
  - a. Evaluate participation in SMC alert and Genasys Protect (formerly Zonehaven) and continue to promote their use (EPC goal?)
  - b. Work with SMC Emergency Department on Ladris evacuation software (EPC/staff)
  - c. Engage WPV-Ready on best practices for family preparedness.
    - Family evacuation plan, GO bags, etc. (WPC goal?)
  - d. Post weekly Preparedness Calendar steps to the community (based on [SMC emergency management handout](#)) (EPC goal?)
    - Coordinate with an emergency prep section on the website.
  - e. Encourage WPV-Ready/WFPD to distribute annual best practices handouts for wildfire hazards. (WPC?)
  - f. Complete AM radio upgrade (EPC goal, in progress)
  - g. Install signage for AM radio (EPC goal, in progress)
  - h. Follow up on prior EPC work that reviewed Fehr & Peer Evacuation Study and assigned priorities to the recommendations from that study (EPC goal?)
  - i. Document and communicate existing evacuation routes and post them on the Town website. EPC has gathered this information; it needs to be consolidated into a single document and posted. (EPC goal?)
  - j. Update and educate other safety committees and the community on Evacuation and Readiness (EPC) (To be continued in 2026)
  - k. Form Alpine Corridor working group by year's end (Council goal)
    - Charter to analyze options and potential improvements for the Alpine corridor.
2. Geologic Safety
  - a. Earthquake Safety Map (GSC and Staff goal)

- Identify the geological Hazards in the main arterial roads of Portola Valley (completed).
      - Publish the Map to the PV website (GSC goal, in progress)
    - b. Publicize and communicate the new information through Town newsletter and PVForum (GSC goal)
    - c. Update Town geological maps. (GSC goal, in progress with ConsultingTown Geologist)
    - d. Create Neighborhood level maps: Over the course of the year create documents that describes the geo hazards for each neighborhood, consequences of geo hazards in terms of evacuation. (GSC 2025 and 2026 goals)
3. Home Vegetation Management – Reduce risks to people and homes.
- a. Continued engagement by WPC on best practices
  - b. Continued engagement with WFPD in support of their 24-01 fuel mitigation ordinance
    - Inspections are coming to PV later this year and next
  - c. Creation and maintenance by WPC of a local vendor list for residents that need assistance with vegetation management/fuel reduction (Distribution of 2025 Fire Safe Vendor List to PVForum completed 9/23/2025).
  - d. Continued engagement by Conservation Committee on best practices
  - e. Continued engagement with WPV-Ready on best practices (WPC goal?)
  - f. Provide the committees with a simple mechanism for distributing information through Town channels (Staff goal?)
4. Home Hardening – Reduce risks to people and homes.  
 [This year, focus on education with simple and effective strategies. Next year, work with WFPD to implement Home Hardening ordinance. First priority is vegetation management]
- a. Engage WPC on best practices
    - Provide information on easy to achieve home hardening (WPC goal?)
    - While every home is different, the analysis suggests that retrofitting costs between \$2,000-\$15,000 for simple and effective actions such as installing flame- and ember-resistant vents, placing metal flashing along a deck, keeping gutters clean, or using noncombustible mulch in the yard. (ref: [Retrofitting home wildfire resistance](#))
  - b. Engage WPV-Ready on best practices
  - c. Distribute information through Town channels
  - d. Wildfire Prepared Home -encourage people to get their homes WPH certified (WPC)
5. Firewise Communities – Reduce risks to people and homes.
- a. Public acknowledgement of the creation and continued work of Firewise Communities by the Council. (Council goal?)
  - b. Engage WPC and WPV-Ready to ensure existing Firewise Communities are successful
    - Encourage Firewise community organizers to provide their members with documentation about their application and community goals.
  - c. Engage WPC to assist in forming Firewise Communities to complete the coverage of all of Portola Valley (WPC goal?)

6. Town Emergency Operations – Update and modernize local emergency operations.
  - a. Revise and update Emergency Operations Plan (EOP)
    - Provide support to EPC subcommittee, as needed (EPC goal, in progress)
    - Plan for staff review and Council adoption
  - b. Determine model for EOC (Emergency Operation Center)
    - Include coordination and expected roles of WPV-CERT and Public Works
  - c. Shelter in Place planning
  - d. Recovery planning
7. Safety Element – Element of the General Plan devoted to safety
  - a. Support Town Council Safety Element Subcommittee and Staff
    - Goal: have a version drafted by end of year and under review by appropriate state agencies
  - b. Additional areas to consider:
    - Vulnerable Populations - Address the social and economic vulnerabilities of people in the community.
    - Smoke Ready - Prepare for the health impacts of wildfire smoke in the community.
    - Recovery & Rebuilding, including extended self-sustainability for earthquake damage. Consider 3 cases: Fire alone, earthquake alone, and fire following earthquake.
8. Building Standards (Planning and Building staff)
  - a. Approve 2025 Building and 2025 Building Energy Efficiency Standards, Code cycle (Staff)
  - b. Institute decking ordinance (WPC)
  - c. -Bring wood shake roof up to current code on change of ownership (WPC)

## Medium Term (Target calendar year 2026)

1. Evacuation and Readiness
  - a. Ensure Town's 10-year plan for road right of way maintenance is budgeted and implemented
  - b. Document the actions of Japan to monitor, bring awareness, communicate, prepare for earthquakes and disasters. (GSC 2026 goal)
  - c. GSC to coordinate with EPC and PW staff to identify the services and support needed in the immediate, medium, and longer time period after an earthquake. (GSC, EPC) (Include USGS Seismic Hazard Recommendations).
  - d. GSC to engage with PW department to develop plan for rapidly assessing damage after earthquake. Identify road closures on major evacuation routes.
  - e. Coordinate with Firewise groups and HOAs to document information about each residence and to identify doctors, special needs people, pets, horses, pools, wells, and other key data points. (GSC, WFC, EPC)
  - f. Recovery & Rebuilding, including extended self-sustainability for earthquake damage. Consider 3 cases: Fire alone, earthquake alone, and fire following earthquake.

- g. Signage (PW?)
  - i. •Road signage on Red flag warning days
  - ii. •No smoking signs on trails where there is a lot of flashy fuel
2. Communication to the Town Residents
  - a. Establish monthly, bimonthly or quarterly Public Communications from the safety committees (GSC, WPC, EPC, Sustainability)
  - b. Have Committees sign up to provide an annual seminar/talk
  - c. Establish areas of refuge and communicate to the public (EPC)
  - d. GSC to create document with information collected on safety and resilience. Work with EPC to avoid duplication. (GSC and EPC)
3. Seismic resistance retrofitting
  - a. This year, focus on education, on shear resistance and foundation hold downs (GSC).
  - b. Future years, focus on finding funding for earthquake retrofits.
4. Sustainable Energy Use
  - a. Review Town Center energy use with the goal to reduce energy usage
  - b. Replace lighting with high efficiency lights (PCE grant, in progress)
5. Building Standards
  - a. Approve 2026 Building Code cycle
6. Post Housing Element Plan – Support for the safety topics in the plan
  - a. Topic 4: Supplemental Safety Measures for HE
    - Coordinate and ensure that the Town’s ongoing safety-related activities also consider the cumulative projected increase in Town population and housing units arising out of HE adoption and adopt mechanisms to coordinate with neighboring jurisdictions with respect to safety measures such as the evacuation plan.
  - b. Topic 5: Impact of HE on Services and Infrastructure
    - Understand projected growth in demand on services and infrastructure resulting from increased population and housing units in Town under the HE, and potential impact on Town budget, and develop strategy for maintaining or improving current service levels.
7. Public Utility Emergency Preparedness
  - a. Work with utilities to document and update, if necessary, comprehensive utility safeguards for wildfire, earthquakes, flooding, and landslides
  - b. Document Cal Water fire hydrant coverage and pressure [Owner? Is this WFPD?]. GSC to provide summaries of expert information. (GSC)
  - c. Document PGE’s plans for undergrounding electrical lines

# Longer Term (Target: as time and resources allow)

1. Wildfire Risk Reduction
  - a. Collaborate with WFPD and area partners to create a Wildfire Risk Reduction Buffer Area (WRRBA) plan, identifying high risk areas surrounding Portola Valley and the plan for needed improvements including brush clearance, controlled burns, and fire breaks.
  - b. Collaborate with relevant parties (Large landowners, MROSD, POST, San Mateo County) on critical buffer areas, including Jasper Ridge, Arastradero, Los Trancos, Skyline, Stanford, Woodside Horse Park, and Ladera.
  - c. Encourage WFPD to identify and document fire prone ravines and adjacent properties.
2. Earthquake defensive structure and planning
  - a. Establish specific development criteria for high seismic risk (fault zones)
  - b. Identify steep slopes and high susceptibility to land sliding or creep.
3. Evacuation and Readiness after wildfire, seismic events, or cascading hazards.
  - a. Evaluate possibility of evacuation through the rear of Town Center to Christ Church in the event access over Portola Road is ruptured at Town Center.
  - b. Evaluate possibility of evacuation of Upper Alpine through the Fogarty property (GSC and EPC)
  - c. Evaluate readiness in the event of cascading hazards that could occur after a major earthquake (fire, liquefaction, lateral spread, off-fault ground disruption, and flooding)
  - d. Create a Resilience Document for Portola Valley based on SPUR Safe Enough to Stay Report. [https://www.spur.org/sites/default/files/2013-09/SPUR\\_Safe\\_Enough\\_to\\_Stay.pdf](https://www.spur.org/sites/default/files/2013-09/SPUR_Safe_Enough_to_Stay.pdf) (GSC and EPC)
  - e. Run an annual shake out exercise coordinated with the U.S. Geological Survey's annual exercise as well as with rapid response teams from San Mateo County, State & federal governments. (Sequoia, PAMF, Kaiser & Stanford medical centers too?) Consider Town Phone alert option. (GSC and EPC)
  - f. Evaluate a town water well at Town Center.
4. Evaluate Town flooding and inundation hazards (GSC)
5. Establish Portola/Sand Hill working group
  - a. Charter to analyze options and potential safety, evacuation, and resilience improvements for the corridor
6. Building Standards
  - a. Establish specific development criteria for areas within designated high-risk zones (e.g. Limiting higher density, detailing fire safety enhancements)
  - b. Explore adopting Passive House standard (AB368) as an alternative compliance pathway for the building efficiency standards established in Part 6 (commencing with Section 100.0) of Title 24 of the California Code of Regulations. (see references below) for more rigorous energy efficient, fire- and smoke-resistant buildings.
  - c. Review shear resistance and vibration resistance standards (GSC).

- d. Goal: to maintain a viable community after a large, damaging earthquake. What is the minimum infrastructure needed for residents to want to stay?
  - e. Consider a new set of standards for temporary occupancy permits after earthquake. Yellow-tagged buildings may be safe on a temporary basis; Houses may not have working utilities; houses may have suffered partial damage, with parts of houses still safe for occupancy until restoration.
7. Home Electrical Resilience and Grid Reliability
    - a. Re-establish Sustainability Committee
    - b. Encourage solar panel and battery storage uptake
    - c. Work with PCE and staff on Microgrid creation
    - d. Work with PCE and PGE on Demand Response Systems
    - e. Work with Sustainability Committee on researching V2G, V2H options
  8. Safety Initiatives Financing
    - a. Grants and grant writing
    - b. Fund raising, PV Fund
  9. Long-term ongoing funding Home Insurance
    - a. Understand and gather information on housing insurance challenges in Town (WPC?)

## Glossary

EPC: Evacuation Preparedness Committee

WPC: Wildfire Preparedness Committee

GSC: Geologic Safety Committee

WPV-Ready: ([www.WPV-Ready.org](http://www.WPV-Ready.org)) Focuses on individual household preparation. Operated by EPiC.

WPV-CERT (Community Emergency Response Team) ([www.wpv-cert.org](http://www.wpv-cert.org)) is an emergency response organization, i.e. after the emergency, operated by EPiC.. Trains volunteers for disaster response.

**EPiC**, which is short for "Emergency Preparedness in Communities, Inc. is a non-profit organization within the area covered by, and under the guidance of, the WFPD. **Epi** receives funding from WFPD and the towns within its district.

## References:

### Wildfire Preparedness

1. [Wildfire Risk.org](https://wildfirerisk.org/) – Extensive resource for wildfire preparedness and risk reduction. Wildfire Risk to Communities is a free, easy-to-use website with interactive maps, charts, and resources to help communities understand, explore, and reduce wildfire risk.

<https://wildfirerisk.org/>

2. [Retrofitting home wildfire resistance](https://headwaterseconomics.org/natural-hazards/retrofitting-home-wildfire-resistance/)

<https://headwaterseconomics.org/natural-hazards/retrofitting-home-wildfire-resistance/>

### Passive House

1. [Are Smoke-Tight Buildings Coming to California?](https://passivehousenetwork.org/news/are-smoke-tight-buildings-coming-to-california/)

<https://passivehousenetwork.org/news/are-smoke-tight-buildings-coming-to-california/>

2. [Implement a Passive House Standard in Title 24 – Climate Action California](https://climateactionca.org/implement-a-passive-house-standard-in-title-24/)

<https://climateactionca.org/implement-a-passive-house-standard-in-title-24/>

3. [Climate Disaster Support - The Passive House Network](https://passivehousenetwork.org/climate-disaster-support/)

<https://passivehousenetwork.org/climate-disaster-support/>

4. [Fire Smart Building](https://passivehousenetwork.org/featured/fire-smart-building-with-passive-house/)

<https://passivehousenetwork.org/featured/fire-smart-building-with-passive-house/>

5. [Wildfire Smoke Infiltration: A New Love Canal?](https://passivehousenetwork.org/featured/wildfire-smoke-infiltration-a-new-love-canal?)

[https://passivehousenetwork.org/featured/wildfire-smoke-infiltration-a-new-love-canal](https://passivehousenetwork.org/featured/wildfire-smoke-infiltration-a-new-love-canal?)

6. [PHCA Community Meeting | Liquid Applied Intelligent Membranes: The Latest for High Performing Buildings on Vimeo](https://vimeo.com/1088656755)

<https://vimeo.com/1088656755>

7. [Non-Combustible Stone Wool \(Mineral Wool\) Solutions for Thermal, Fire, Sustainability and Sound Control on Vimeo](https://vimeo.com/1078086461)

<https://vimeo.com/1078086461>

8. [Fire Resilient Envelope & HVAC Design | PHCA Community Meeting - March 2025 on Vimeo](https://vimeo.com/1070102698)

<https://vimeo.com/1070102698>