

# E-Bikes and Youth

## What Parents Need to Know



San Mateo County  
**SAFE ROUTES TO SCHOOL**

Healthy Kids • Green Communities • Safe Journeys

# Where to draw the line?

750 watts / 20mph



Bicycles/E-bikes



E-motos

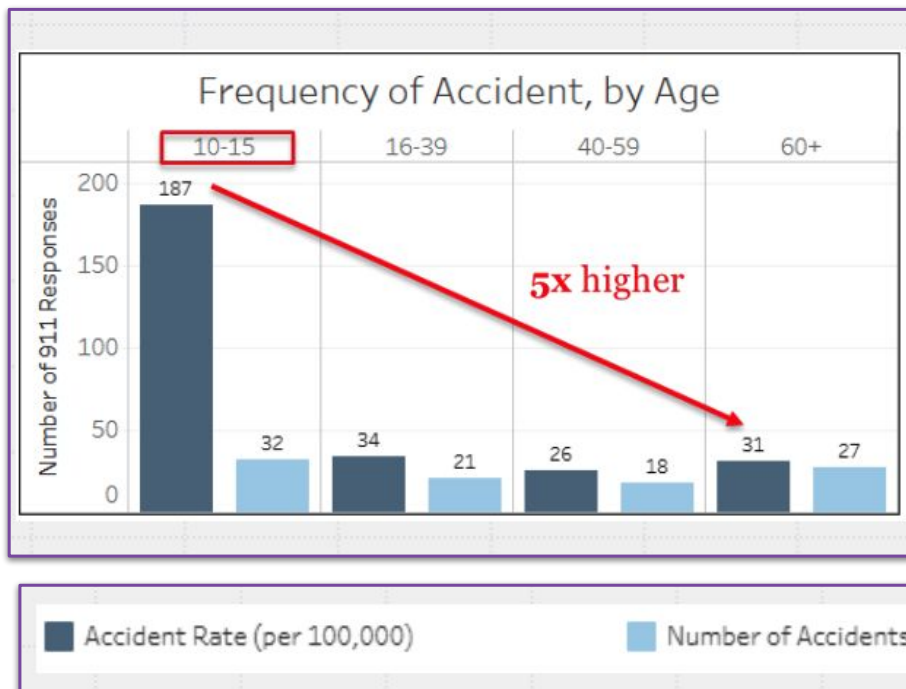


# Why It Matters



Unregistered e-motorcycles aren't legal to ride on roads, sidewalks, or bike paths - and parents could be held legally and financially responsible if a crash appears.

**10-15 year olds are 5 times more likely to have serious injuries requiring ambulances than other age groups.**



**Marin County Public Health E-Bike Safety Study**



## Of 8 most recent e-wheels incidents:

- All were illegal e-motos
- 75% involved children 16 or younger.





## Tuttio Soleil01 Electric Mini Bike For Kids & Adults - UL Certification

48V **2000W** 1008Wh Lithium Cell **37Mph** UL2272



8 Pack Electric Bicycle Frame Identification Class Number Stickers Decals 2X 3.5 Inch - E-Bike Class Number Sign Mark...

Options: 2 sizes

4.3 ★★★★★ (18)

\$7<sup>89</sup> (\$0.99/count)

✓prime Tomorrow

FREE delivery Tomorrow, Oct 17



# RIDESTYLE WITH YOUTH ENERGY



MACFOX EMPOWERS YOUTH COMMUTING WITH LEGAL ROAD SAFETY,  
STUNT PLAYABILITY, AND ROOM FOR CUSTOMIZATION.



# X2



**1000W**

PEAK POWER

**28MPH**

TOP SPEED

**90MILES**

MAX RANGE



2000W(1000w X 2)

Dual motors



Revv1 FL Miami Profile NEW

GET OFF EXTRA BATTERY/BALANCER

## Ride1Up REVV1 Specs

- MSRP \$2,295 (full suspension) / \$1,795 (hardtail)
- Range 30-60 mi
- Top Speed 20 mph (Class 2) **35+ mph (unlocked)**



### Max Speed

37 MPH



### SUPER73-ZX / S / R SERIES

Top Motor Assisted Speed

	WITH THROTTLE	WITH PEDAL ASSIST
CLASS 1 MODE	DEACTIVATED	20 MPH*
CLASS 2 MODE (DEFAULT)	20 MPH*	20 MPH*
CLASS 3 MODE	DEACTIVATED	25 MPH*
OFF-ROAD MODE	<b>25+ MPH*</b>	25+ MPH*

\*Approximate based on rider weight, battery, climate, charge, terrain, etc.

### SUPER73-Z MIAMI

Top Motor Assisted Speed

	WITH THROTTLE	WITH PEDAL ASSIST
CLASS 1 MODE	DEACTIVATED	20 MPH*
CLASS 2 MODE (DEFAULT)	20 MPH*	20 MPH*
CLASS 3 MODE	DEACTIVATED	UP TO 26 MPH*
OFF-ROAD MODE	UP TO 26 MPH*	UP TO 26 MPH*

\*Approximate based on rider weight, battery, climate, charge, terrain, etc.



## Spark 20x4.0" Moped-Style E-Bike

**\$699.00** ~~\$1,299.00~~ Save \$600

**Autumn Sale price: \$699. Going back to \$799 soon!**

1 DAY | 7 HOUR | 33 MIN | 26 SEC

  
**1500 W**  
Peak Motor

  
**28+ Mph**  
Top Speed

with the necessary documents for you to pick up your order locally.



Peak Motor  
**1500 W**



Max Range  
**65-100 Miles**



Top Speed  
**32 MPH**



Torque  
**90 N·m**



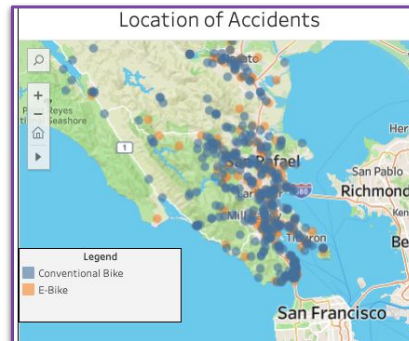
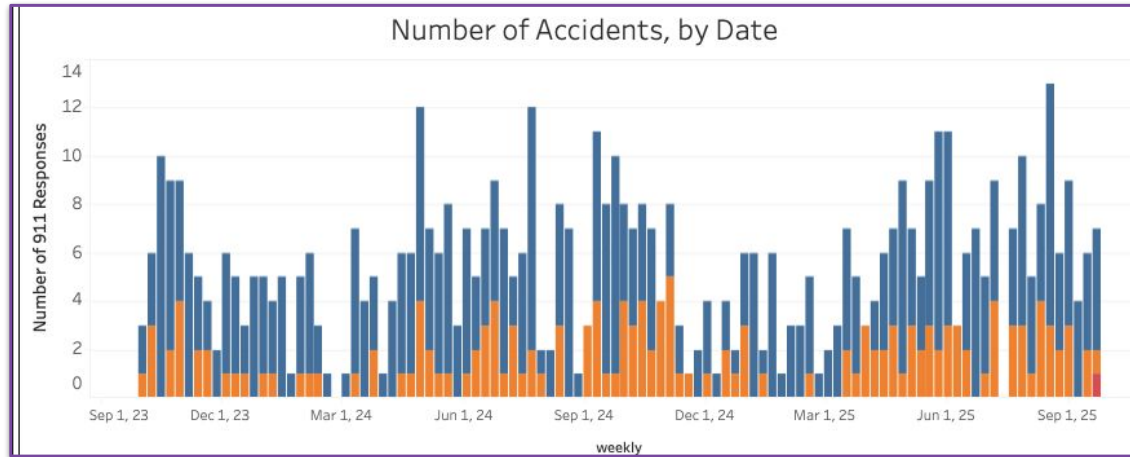
Phone App  
**YES**



Max Load  
**450 LBS**

# Measuring the Problem: Part 2

## Tracking Injuries/Fatalities



<https://www.marinhhs.org/bicycle-safety>

# Existing Laws for E-Motors



Crime to drive a motor vehicle without a driver license and DMV registration.

*Veh. Code 12500(a)-(b); 4000.*

Crime for parents to allow unlicensed juveniles to drive motor vehicle.

*Veh. Code 14607*

Crime for parents to place child “in a situation where his or her person or health is endangered” *Penal Code 273(a)-(b)*

Note: Police may detain and arrest drivers with reasonable belief that they are under 16 years of age. Veh.Code. 12801.5(d)

# What About E-Scooters?

- Driver's license or learner's permit required
- 15 mph speed limit on all roads
- Helmet required if under 18



# School-law Enforcement Partnership



**MILLER CREEK**  
MIDDLE SCHOOL



[Home](#) / [Miller Creek Middle School](#) / [Our School](#) / [E-Bike Registration](#)

## E-Bike Registration



# San Francisco Chronicle

**One Marin dad has landed at the center of a firestorm over kids and their \$5,000 e-bikes**



# WHY TO TELL YOUR CHILD NO THROTTLE “E-BIKES”



# ILLEGAL

- Most are too fast to qualify as “e-bikes.” They are illegal to operate without a driver’s license, DMV registration, insurance, etc.
- Sticking a Class 2 e-bike label on a motorcycle doesn’t make it an e-bike!
- Police can impound them. You lose your investment.

If your child hurts or kills someone while operating a throttle vehicle, you may be held personally liable in a civil lawsuit, even if you weren't present. That could mean losing your savings, home or retirement fund.



# CRIMINAL LIABILITY

- It's a misdemeanor crime to allow anyone without a license (including your child) to operate a motor vehicle you bought.

**Penalties:** Up to six months in jail and a \$1,000 fine

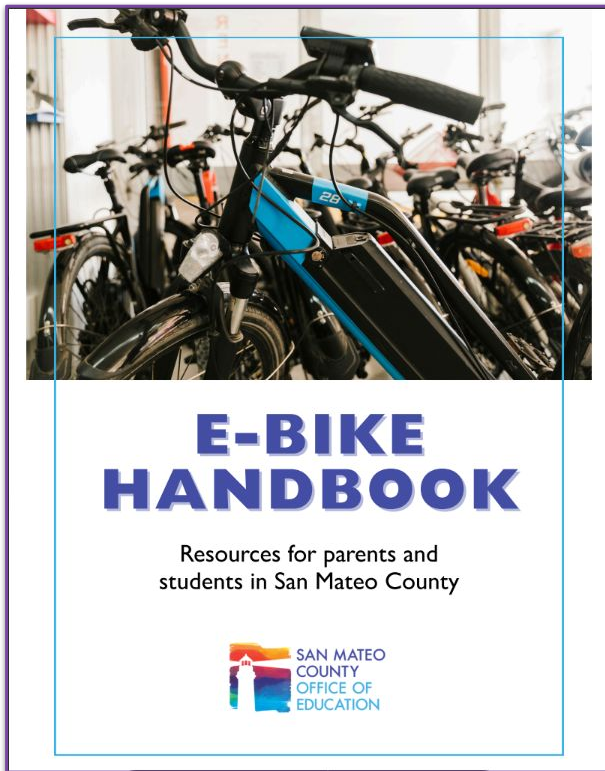
California Vehicle Code 17707VC

- Giving your child a high-speed vehicle may also constitute the crime of child endangerment.

**Penalties:** Up to six years in state prison

California Penal Code § 273a(a)

# E-Bike Handbook and Toolkit



## E-Bike Handbook



**Thank You!**

**Bob Mittelstaedt**

**[ramittelstaedt1010@gmail.com](mailto:ramittelstaedt1010@gmail.com)**

**Theresa Vallez-Kelly**

**[tvkelly@smcoe.org](mailto:tvkelly@smcoe.org)**

